

O. P. JINDAL SCHOOL, SAVITRI NAGAR
Half-Yearly Examination– (2023-24)

Class/Sec- V/ _____
Subject – Science

MM – 80
Time- 2 hours

Name _____

Roll No. _____

Fifteen minutes extra will be given for reading the Question Paper.

General Instructions –

1. The Question Paper comprises of 6 sections A,B,C,D,E. There are 24 questions in all.
2. Section A, Q1 comprises of 12 MCQ type questions and carries 1 mark each.
3. Section B, Q2 & Q3 comprise of 8 Case-Based type questions and carries 1 mark each..
4. Section C, Q4 to Q12 are very short answer type questions, carries 2 marks each.
5. Section D, Q13 to Q21 are short answer type questions, carries 3 marks each.
6. Section E, Q22 to Q24 are long answer type questions, carries 5 marks each.

SECTION – A

Q1. Choose the correct option.

(12x1=12)

(i) What is lower chamber of the heart called?

- (a) Ventricle (b) Atrium (c) Aorta (d) Vena cava

(ii) How many chambers is the heart divided into?

- (a) Three (b) Four (c) Five (d) Six

(iii) The _____ in the heart allow blood to flow only one way.

- (a) Pulse (b) Nerves (c) Arteries (d) Valve

(iv) Blood loses _____ and picks up oxygen in the lungs.

- (a) Carbon dioxide (b) Oxygen (c) Water (d) Glucose

(v) A bunch of nerves running through the spine is called

- (a) Cerebrum (b) Cerebellum (c) Spinal cord (d) Spinal column

(vi) The ribs are joined to the vertebrae and the

- (a) Collarbone (b) Breastbone (c) Shoulder bone (d) Vertebral column

(vii) All the bones of the body make up the _____ system.

- (a) Skeletal (b) Circulatory (c) Nervous (d) Muscular

(viii) The way one holds one's body while standing, sitting etc.

- (a) Personality (b) Tendon (c) Posture (d) Knuckle

(ix) A protein in the blood that carries oxygen

- (a) Glucose (b) Sugar (c) Vitamins (d) Haemoglobin

(x) Find the odd one out.

- (a) Rickets (b) Anaemia (c) Diabetes (d) Nightblindness

(xi) Which of these are non-communicable diseases?

- (a) Skin disease (b) Influenza (c) Heart disease (d) Typhoid

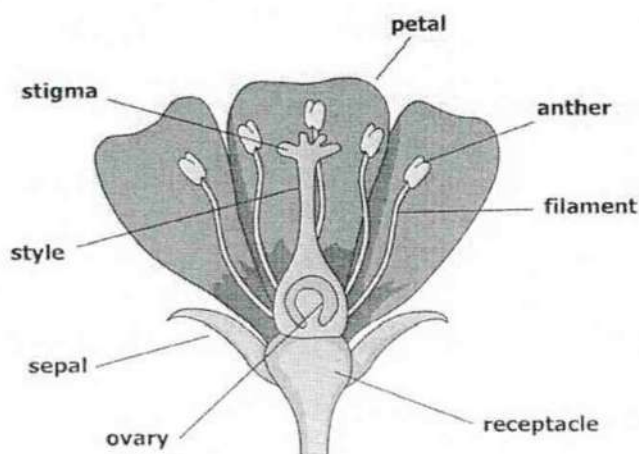
(xii) Using mosquito-nets prevents us from

- (a) Malaria (b) Rabies (c) Cold & cough (d) Dysentery

SECTION -B

Q2. Look at the diagram and choose the correct answer.

(4x1=4)



(i) Which of these is not a female part of flowers?

- (a) Ovary (b) Style (c) Anther (d) Stigma

(ii) The colourful leaves of the flower

- (a) Petals (b) Sepals (c) Receptacle (d) Style

(iii) The ovary turns into a

- (a) Seed (b) Fruit (c) Stem (d) Flower

(iv) The tip of the male part is called

- (a) Ovule (b) Stigma (c) Anther (d) Filament

Q3. Read the following paragraph and choose the correct answer.

(4x1=4)

Vegetative propagation is something very interesting to plants. As a matter of fact, we don't always need seeds to grow plants. Because new plants can grow from older plants using vegetative propagation methods such as grafting and budding. This process involves only a single plant and the offspring that arises is identical, both genetically and morphologically, to the parent plant. Vegetative propagation occurs through vegetative plant structures. In vascular plants, the roots, stems, leaves, and nodes are the vegetative propagation structures. Vegetative reproduction has many advantages and also has disadvantages.

(i) In vegetative reproduction we do not need _____ to grow plants.

- (a) Stem (b) Seeds (c) Spores (d) Roots

(ii) In this process the offspring plants are _____ to their parent plants.

- (a) Identical (b) Equal quantity (c) Nonidentical (d) Different

(iii) Which of these is an advantage of vegetative propagation?

- (a) Very slow (b) Wait for rain (c) Very fast (d) Depends on air

(iv) Which of the following is not a part of vegetative reproduction in plants?

- (a) Leaf (b) Root (c) Flower (d) Node

SECTION – C

(9x2=18)

Q4. How are arteries different from veins?

Q5. Mention two things that are helpful for maintaining a healthy heart.

Page 3

Q6. Write two functions of the skeletal system.

Q7. Which part of a bone has bone marrow? What is the most important job of bone marrow?

Q8. What is blood pressure?

Q9. Look at the picture. Write two things that we should follow to have a good life.



Q10. Write two things that we can do to prevent diseases that spread through food and water.

Q11. Match the columns.

- | | |
|-------------------|-----------------|
| (i) Chikungunya | Through water |
| (ii) Skin disease | Mosquitoes |
| (iii) Influenza | Through contact |
| (iv) Typhoid | Through air |

Q12. Write two ways that cause water pollution.

SECTION – D

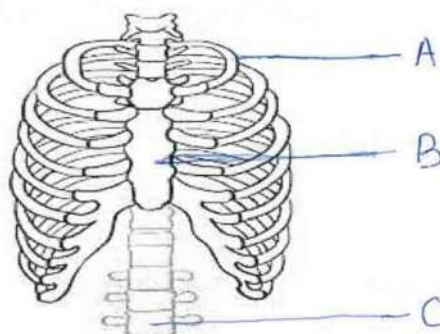
(9x3=27)

Q13. How does the blood circulate between the heart and the lungs?

OR

What is a heartbeat? How is it related to the pulse?

Q14. See the following picture and name the parts A, B, C.



Q15. (i) What is a balanced diet?

(ii) Why is it good to add roughage in our meals?

Q16. (i) What are communicable diseases?

(ii) How does rabies spread?

Q17. In what ways can food get contaminated? (three ways)

OR

Write any three hygienic habits.

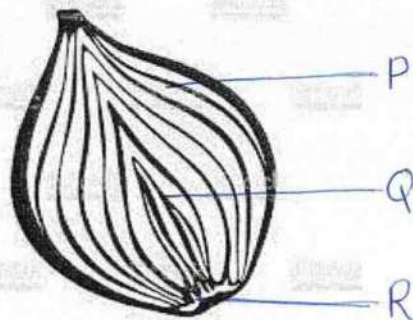
Q18. What is pollination? Describe self-pollination and cross-pollination.

Q19. Why are flowers colourful? Write the difference between unisexual and bisexual flowers.

OR

Why do seeds need to be dispersed? Write one way how animals help in seed dispersal.

Q20. Look at the picture. Name its P, Q, R.



Q21. (i) What are storage roots?

(ii) How do we know that potato, onion are stems not roots?

SECTION -E

(3x5=15)

Q22. (i) What problems can overeating cause?

(ii) What roles do proteins have in the body? (Mention three.)

OR

(i) Why are carbohydrates considered our main source of energy though fats can produce much more energy?

(ii) What is good about having fermented food?

Q23. Draw diagrams to show germination of seeds takes about a week for the leaves to open out.

OR

What is a pistil? Draw and describe its parts.

Q24. Why is reproduction through seeds called sexual reproduction?

OR

What is vegetative reproduction? Write two good sides and one bad side of it?
